



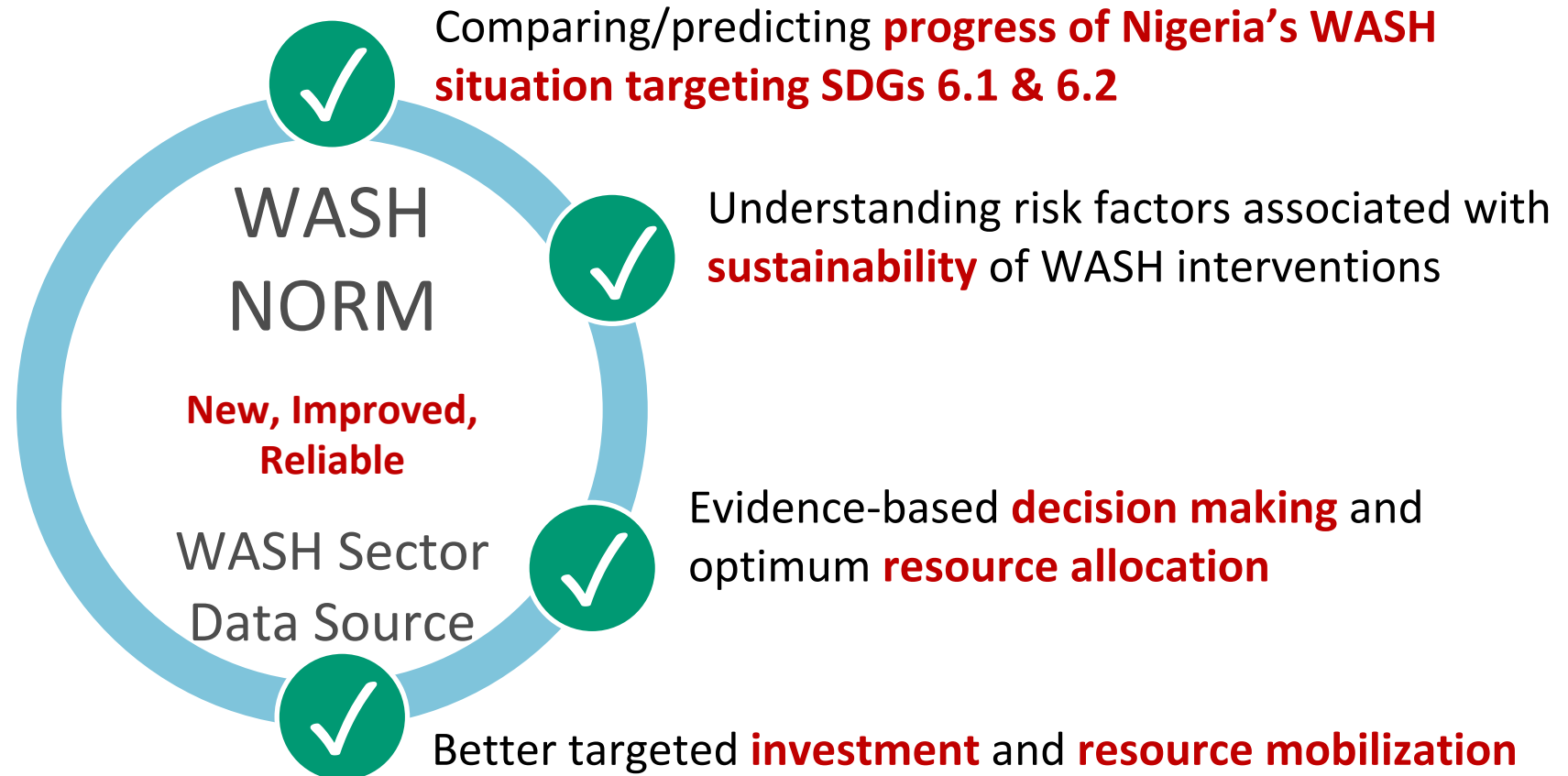
Federal Ministry of Water Resources

2021 WASHNORM III Findings and Implications

**A Presentation by the Honourable Minister
Engr. Suleiman H. Adamu, FNSE, FAEng**

Introduction / Background

WASH National Outcome Routine Mapping (WASH NORM) is a national representative indicator-based survey designed to provide a reliable, regular and comprehensive statistics of the WASH sector.



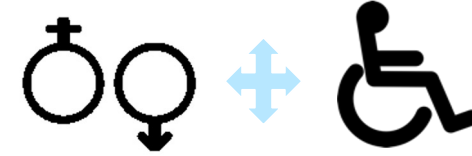
Key Thematic Areas Covered



Status of Access to WASH Services in Households



WASH Facilities Coverage and Functionality



Gender and Inclusion of COVID-19 Indicators



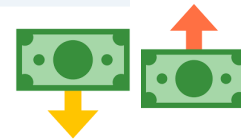
Quality of Services



User Participation and Satisfaction



Sustainability Practices



WASH Expenditure

WASHNORM EDITIONS AND FOCUS

2018

WASHNORM I

- ❑ First ever WASHNORM
- ❑ Process started in 2017
- ❑ Data was collected in 2018
- ❑ Report published in 2019
- ❑ Number of data points
- ❑ Focus was to have general data for the WASH Sector

2019

WASHNORM II

- ❑ Second edition of WASHNORM
- ❑ Built on the success of WASHNORM I
- ❑ Data was collected in 2019
- ❑ Report published in 2020
- ❑ Data points expanded to over 361
- ❑ SDG indicators were featured (water quality)
- ❑ Highlight was focused on sustainability (dependency and adequacy)

2021

WASHNORM III

- ❑ Third edition of WASHNORM
- ❑ Built on the success of WASHNORM I & II
- ❑ Data was collected in 2021 (due to COVID-19 Pandemic, 2020 edition was skipped)
- ❑ Data points included impact of COVID-19
- ❑ Refined the process for measuring urban utility
- ❑ Highlight is focused on urban systems and networks.

2021 WASHNORM VALUE ADDITION

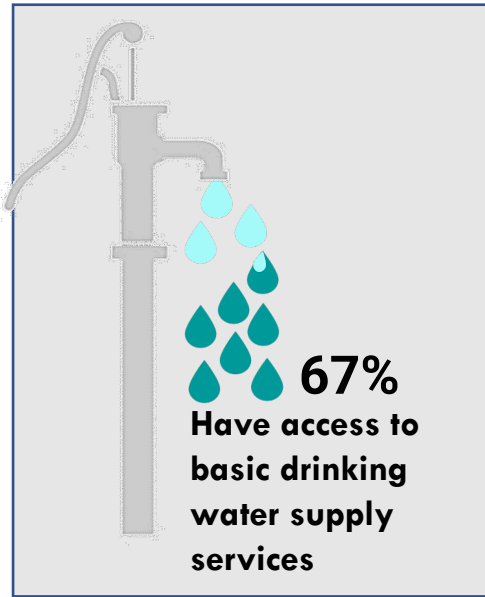




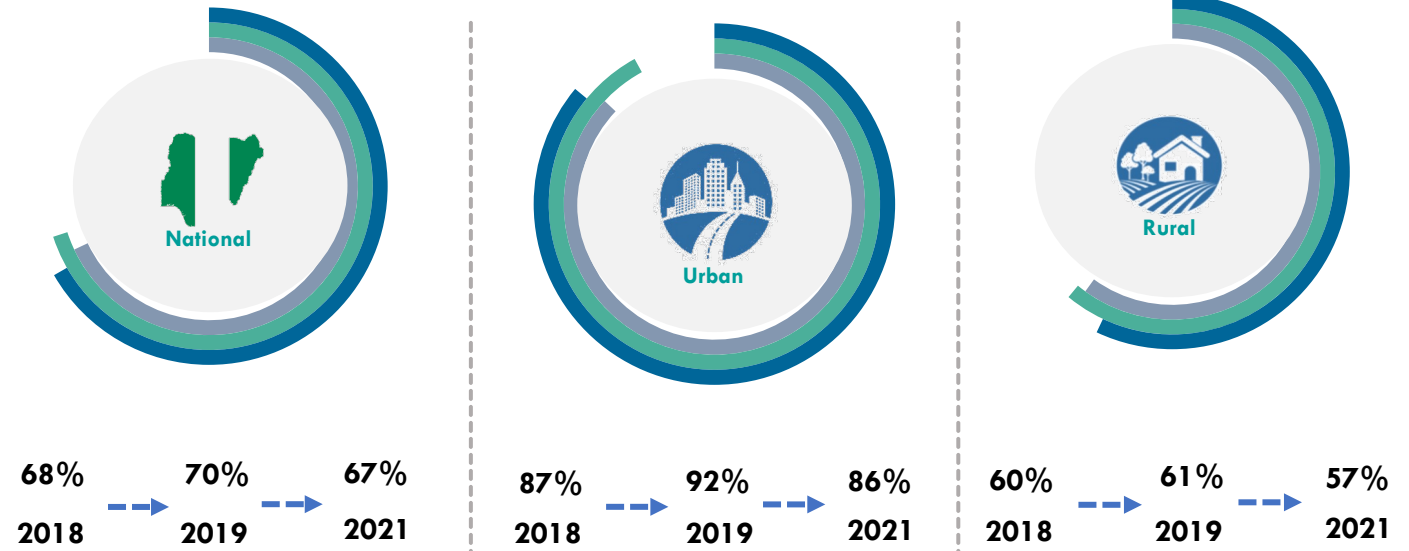
**SUMMARY OF FINDINGS
ON
WATER SUPPLY
SERVICES**

WASHNORM 2021: ACCESS TO BASIC WATER SUPPLY

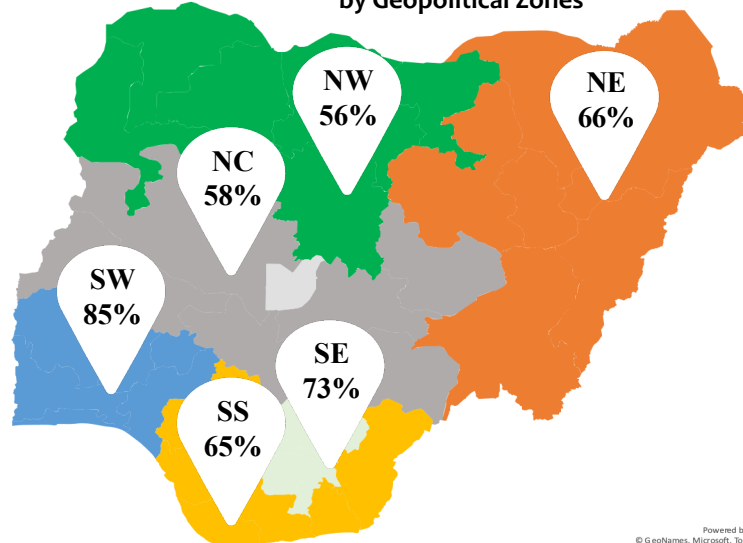
Access to Basic Drinking Water Supply Services



Trends in the use of basic drinking water supply (2018 – 2021)



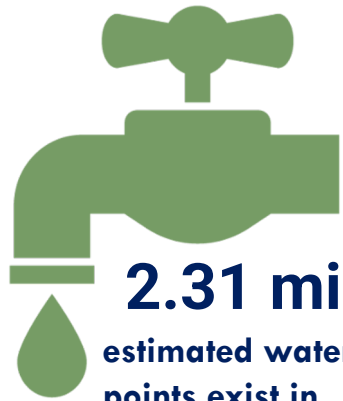
Access to Basic Water Supply Services by Geopolitical Zones



Access to Safely Managed Water Services

*The percentage of the population with access to safely managed drinking water services **steadily improved from 3.7% (MICS) in 2016 to 13% in 2021.** This implies that **additional 21 million Nigerians drink water from an improved source that is accessible on premises, available when needed and free from faecal and priority chemical contamination***

WASHNORM 2021: SUMMARY OF WATER SUPPLY FACILITIES



2.31 million
estimated water points exist in Nigeria



Water Facility Construction



81%

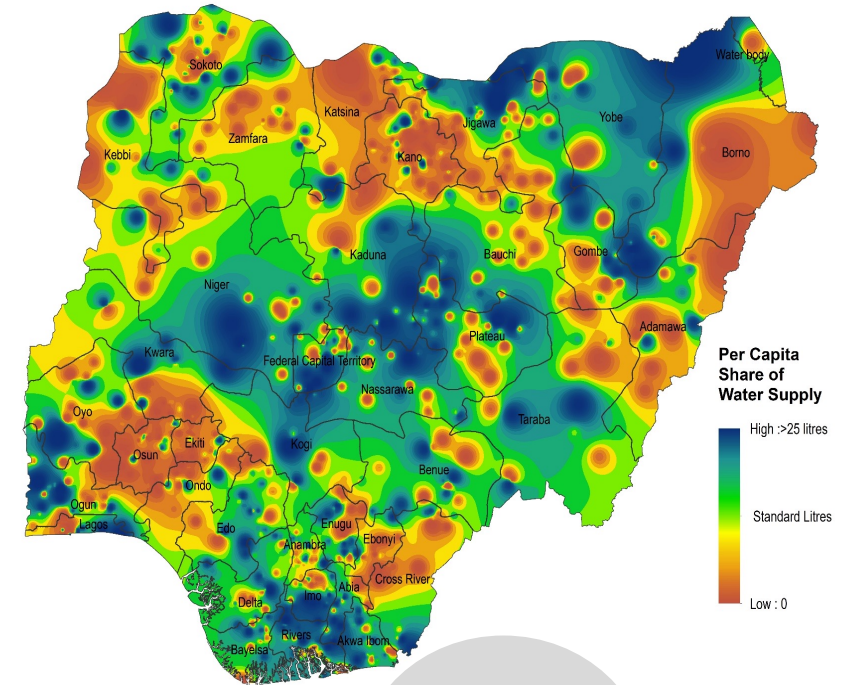
of water points are constructed by non-government actors



75%

of water points are self-supplied

Map Showing the Per Capita Share of Water across Nigeria

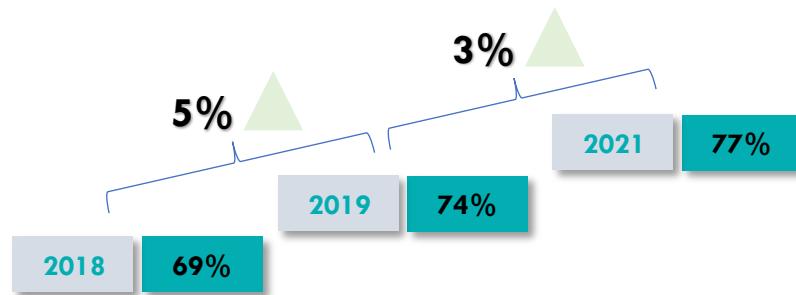


Functionality of Water Systems in Nigeria



77%

of public water points are functional



Up to 77% of publicly owned water points are functional, an eight-percentage point cumulative increase from 2018. There are only minor disparities across area of residences, ownership, usage, and water facility type.



10 liters

Average per capita volume of water for rural population

WASHNORM 2021: MANAGEMENT OF WATER SUPPLY FACILITIES



7%

of all publicly used water points have tariff system in place

WASHCOM



30%

of all publicly used water points have management committees in place



80%
Male



20%
Female



51%

of all publicly used water points have caretakers in place



94%
Male



6%
Female

SUMMARY RESULT ON STATE URBAN WATER UTILITIES



28

out of 36 states (+FCT) have urban water utilities that produce water



16

states have fully functional urban water utilities



8%

of urban water utilities' consumers are metered



54%

of urban utilities' consumers do not depend solely on their taps for drinking water

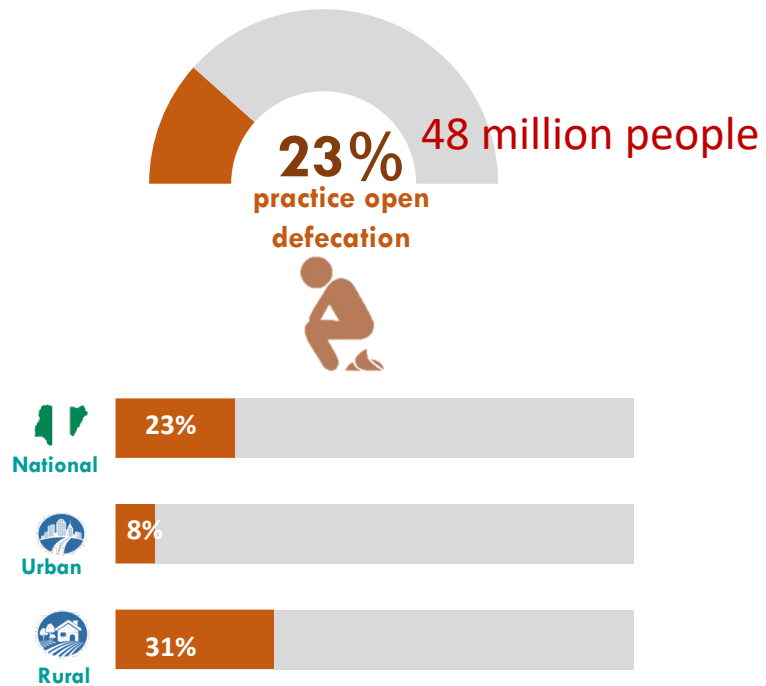
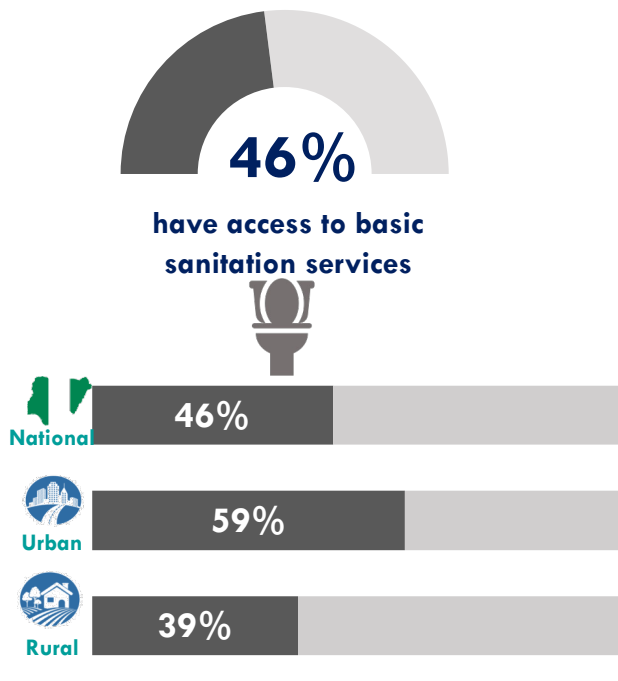
SERVICE CONNECTION/ CAPACITY UTILIZATION

- ❑ Only 444,171 (8%) of 1,195,262 urban water service connections across the country are active
- ❑ The combined installed capacity of all waterworks is 8,058,150m³ per day
- ❑ The operating capacity of all waterworks is 1,975,073m³ per day representing a 25 % capacity utilization.

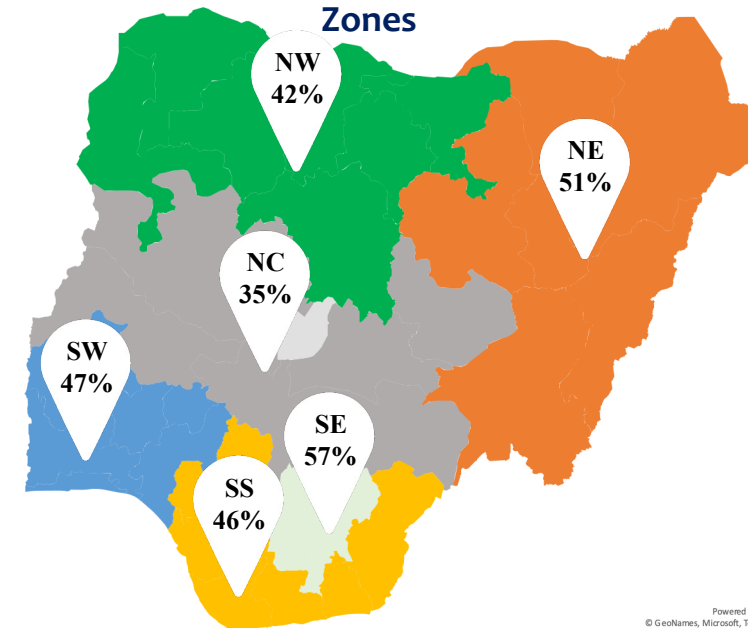


SUMMARY OF FINDINGS ON SANITATION & HYGIENE SERVICES

WASHNORM 2021: ACCESS TO BASIC SANITATION SERVICES



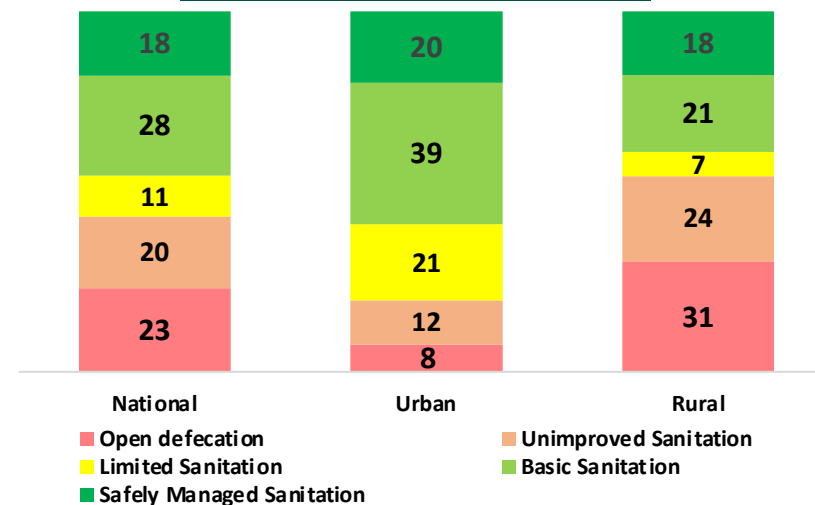
Access to Basic Sanitation Services by Geopolitical Zones



Access to Safely Managed Sanitation Services

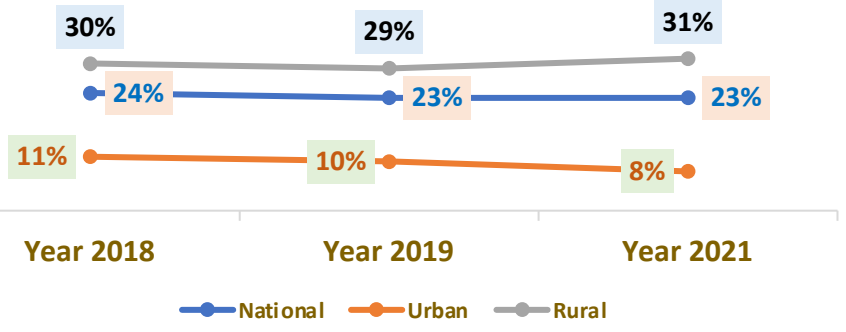
Only 18% of Nigerians (37 million people) have access to safely managed sanitation services

Sanitation Service Ladder



WASHNORM 2021: OPEN DEFECACTION

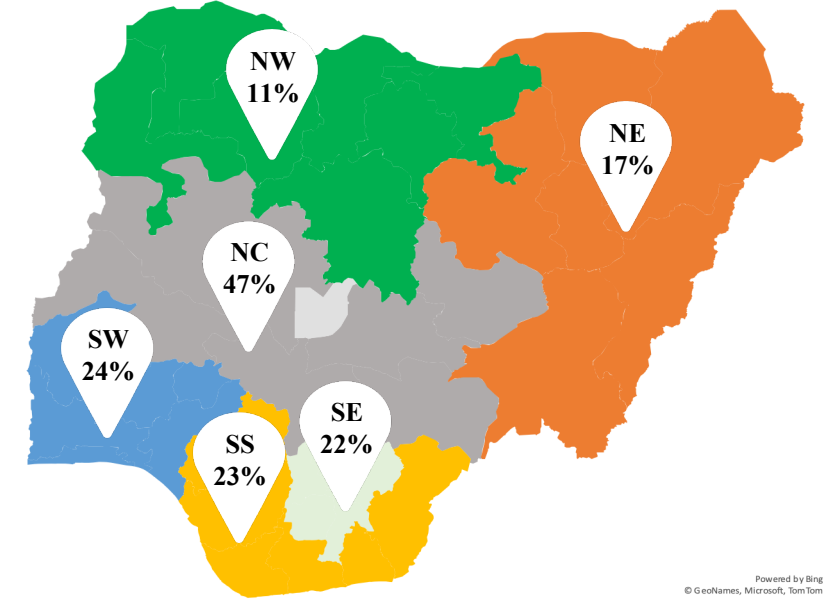
Trends in Open Defecation (2018 – 2021)



In 2021, 48 million (23%) of Nigerians continue to practice open defecation.

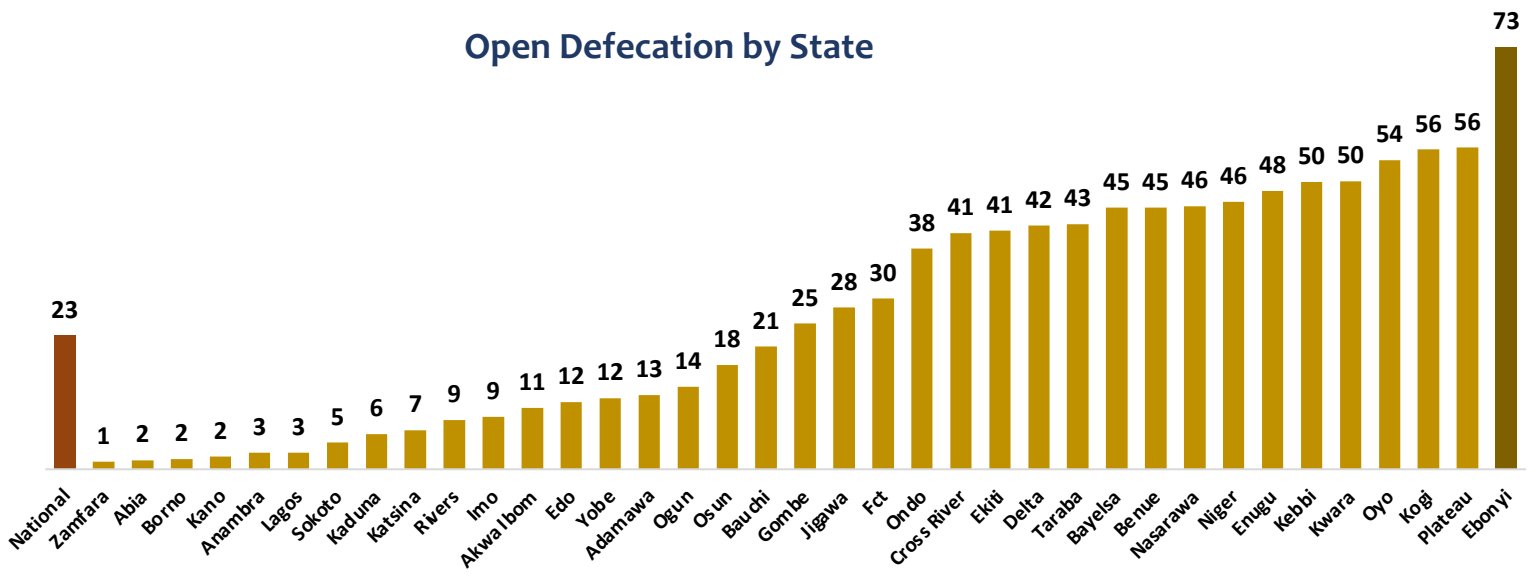
With an estimated population of 206 million people, progress in ending open defecation is dwarfed by the increasing population.

Open Defecation by Geopolitical Zones

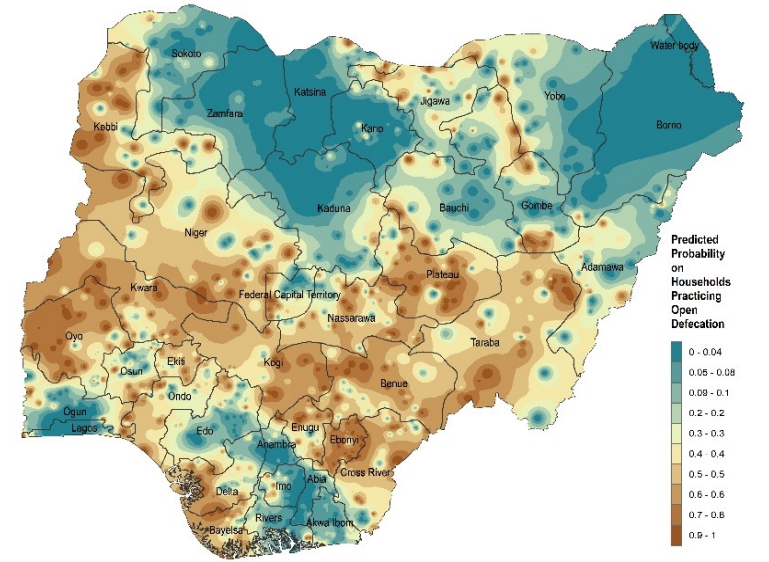


Powered by Bing
© GeoNames, Microsoft, TomTom

Open Defecation by State



Prevalence of Open Defecation in Nigeria

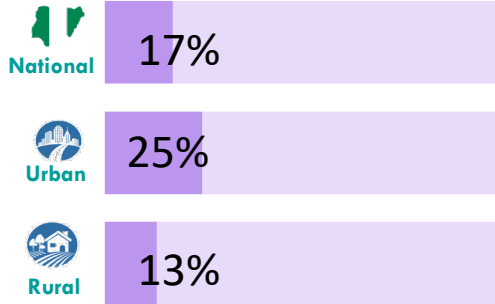


WASHNORM 2021: ACCESS TO BASIC HYGIENE SERVICES

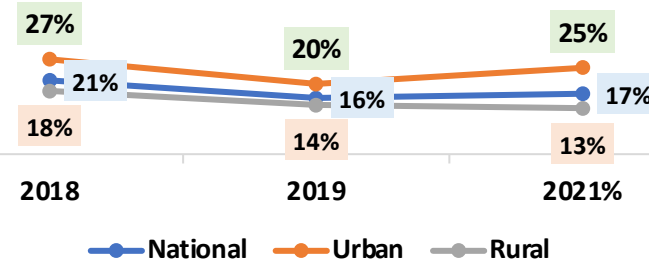


17%

Households have access to basic hygiene services



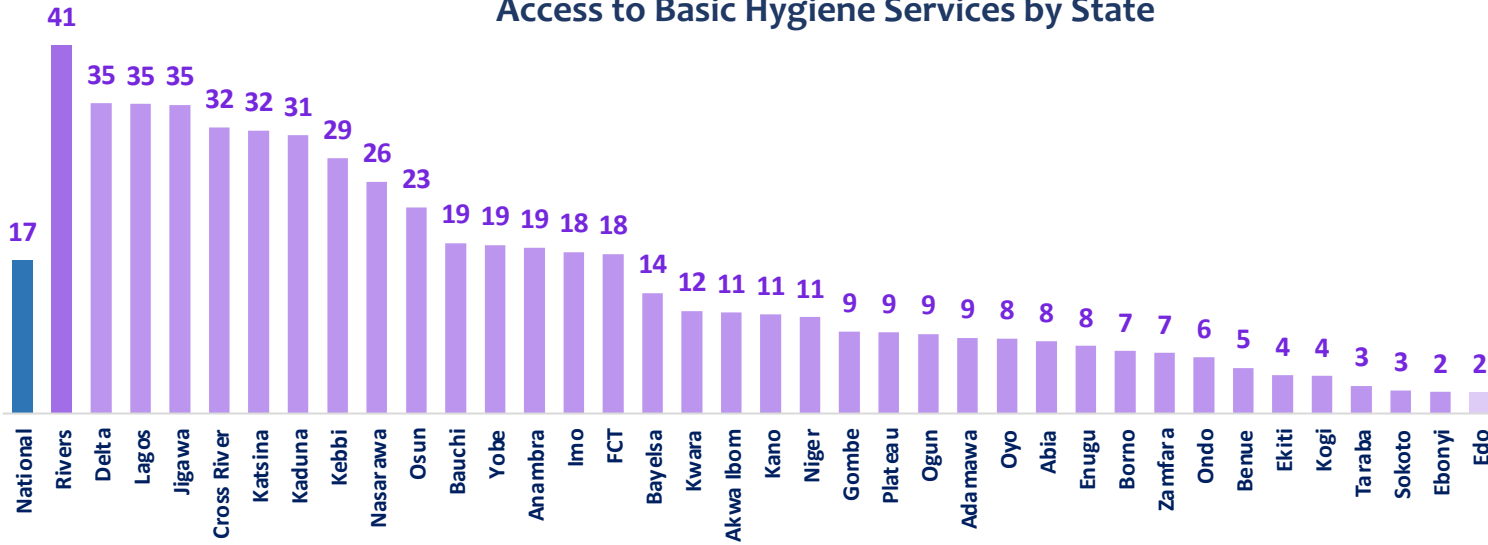
Trends in the use of Basic Hygiene Services by Area of Residence



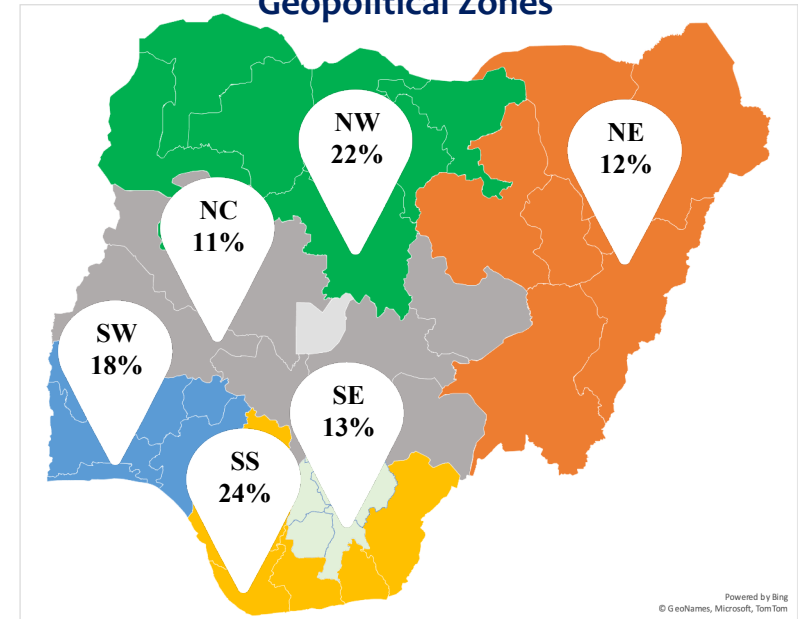
99%

Heads of households have knowledge of at least 2 critical times for handwashing

Access to Basic Hygiene Services by State



Access to Basic Hygiene Services by Geopolitical Zones



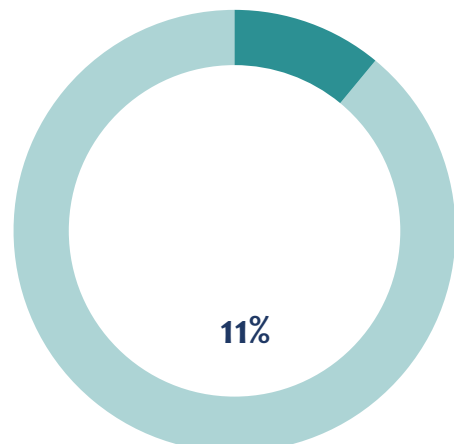


SUMMARY OF WASH SERVICES IN SCHOOLS

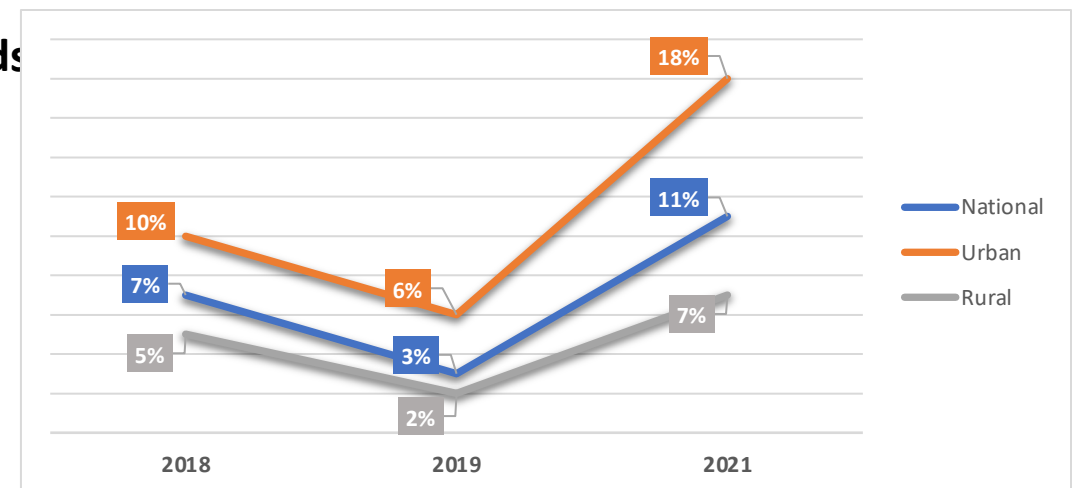
Situation of WASH in Schools



Only 11% of schools have basic water supply, sanitation, and hygiene services. At 18%, schools in urban areas are about twice as likely to have access to basic water supply, sanitation, and hygiene services than schools in the rural areas at 7%.



Schools have access to basic water supply, basic sanitation, and hygiene services



Situation of WASH in Health Facilities

Only 6% of health care facilities have basic water supply, sanitation, and hygiene services. At 10%, health care facilities in urban areas are twice as likely to have access to basic water supply, sanitation, and hygiene services than health care facilities in the rural areas.

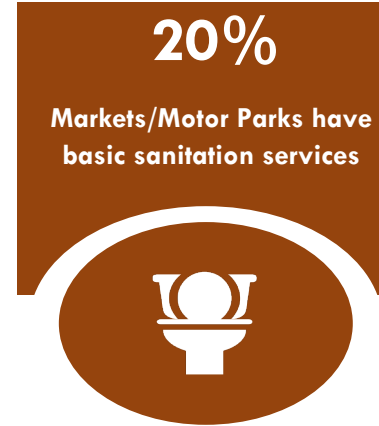


Situation of WASH in Public Places (Markets and Parks)

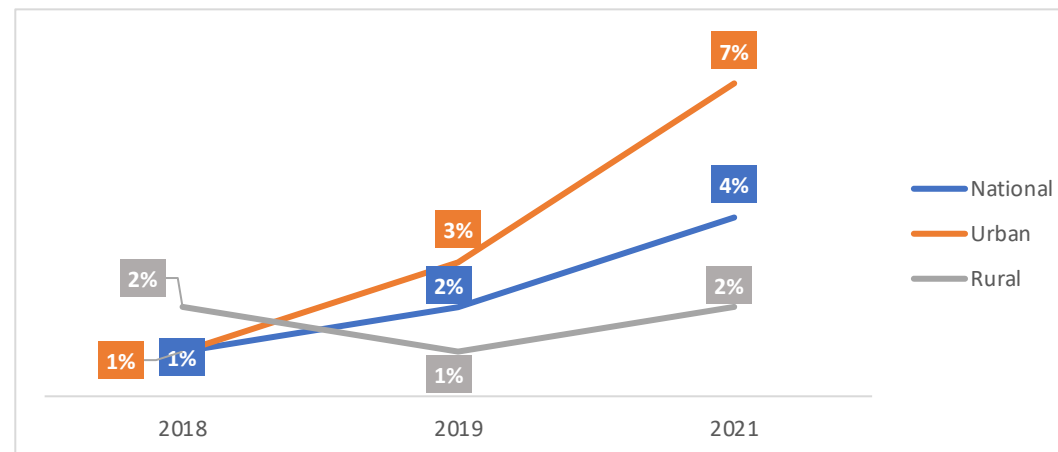
Only 4% of markets and motor parks have basic water supply, sanitation, and services. At 7%, markets and motor parks in urban areas are four times more likely to have access to basic water supply, sanitation, and hygiene services than those in rural areas.



4% Markets/Motor parks have access to basic water supply sanitation and hygiene services



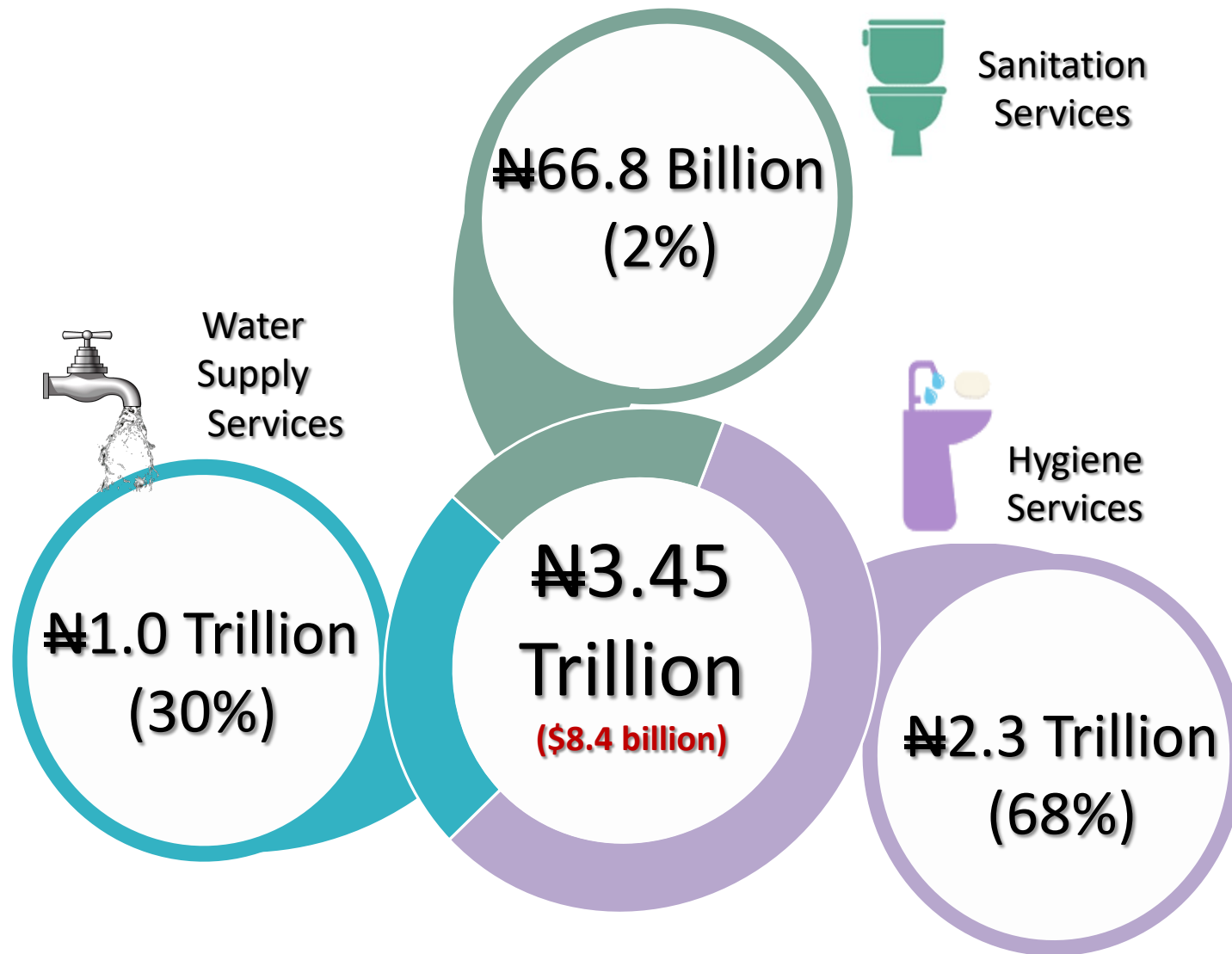
Trends in Access to Basic WASH Services in Markets/Motor Parks





HOUSEHOLD EXPENDITURE ON WASH

SUMMARY OF WASH ACCOUNTS: HOUSEHOLDS OUT OF POCKET EXPENDITURE (2020)



Per Capita Expenditure	
Water	₦5,005
Sanitation	₦324
Hygiene	₦11,381
WASH Services	₦16,710

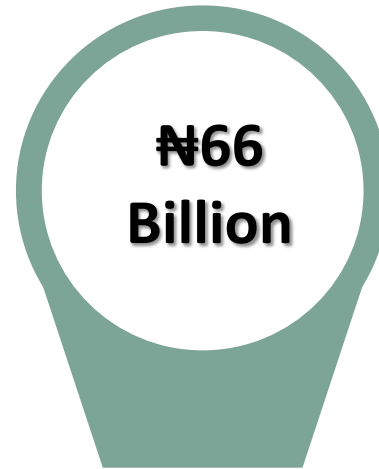
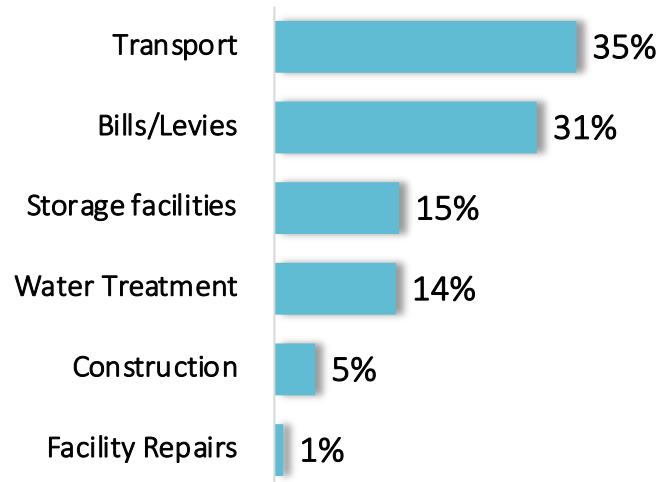
Per Household Expenditure	
Water	₦24,271
Sanitation	₦1,570
Hygiene	₦55,185
WASH Services	₦81,028

Household WASH Expenditure as a percentage of Gross Domestic Product(GDP) stood at 2.3%

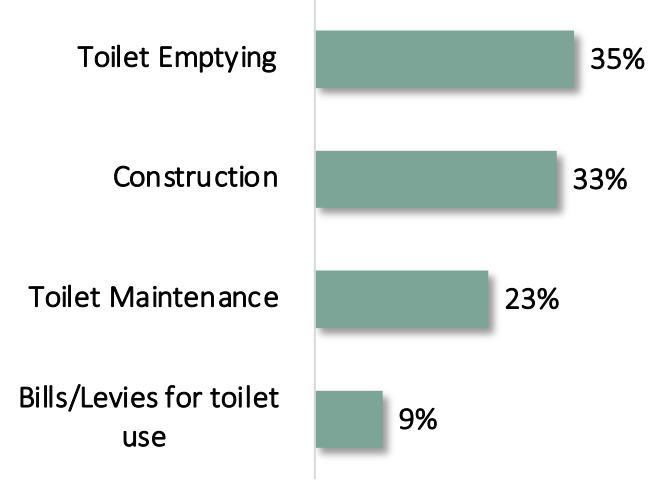
BREAKDOWN OF EXPENDITURE (₦3.45 TRILLION): BY WASH SERVICES



WATER SUPPLY SERVICES



SANITATION SERVICES



HYGIENE SERVICES



Implications of Poor WASH Access on National Development

- **Economic Loss:** Nigeria losses about 1.3% (₦455 Billion) of her GDP annually to poor access to sanitation.
- **Health Impact:** 102,000 under 5 child deaths occur each year due to diarrhea; about 90% is directly attributed to unsafe water and sanitation. Nigeria is the second country after India with the most child deaths due to diarrhea.
- **Impact on Child Development:** 1 in 4 children under 5 exhibit severe stunting while 1 in 10 are wasted, due to frequent episodes of diarrhea and other WASH related illnesses.
- **Poor Education Outcome:** Reduced school enrolment and attendance due to time loss in search of water, frequent episodes of WASH-related illnesses and poor access to menstrual hygiene management facilities in schools
- **Loss of Dignity and Security:** Open defecation results to loss of dignity, increased risks of insecurity and violence against women and children

PLEDGE CARD ON OPEN DEFECATION FREE NIGERIA BY 2025

- Commitment to make Nigeria Open Defecation Free by 2025
- To be endorsed by President, VP and State Governors.
- Already endorsed by President and VP
- Request for Governors endorsement of Pledge Card.
- Advocate for political prioritization of WASH and Clean Nigeria Campaign



Endorsement of Pledge Card by President Buhari and VP Osinbajo





THANK YOU